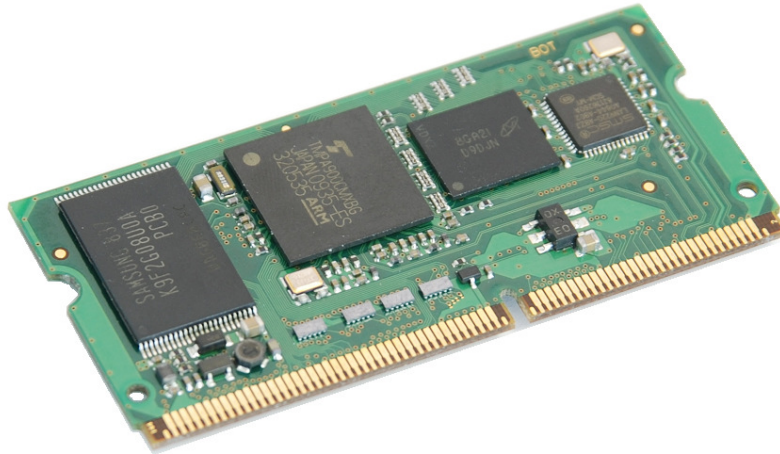


ELDIO Download Wizard

Programming Software



2010 GLYN GmbH & Co. KG

All rights reserved. No part of this documentation may be reproduced or, with the use of electronic systems, edited copied or transmitted, in any form (print, photocopy, microfilm or another procedure) without the express authority of the GLYN GmbH & Co. KG, D-65510 Idstein.

The GLYN GmbH & Co. KG, D-65510 Idstein does not accept liability or provide any guarantee with respect to the contents of this documentation. The GLYN GmbH & Co. KG, D-65510 Idstein retains the right of revising this work. All programs and descriptions have been created to the best of our knowledge and tested with great care. However, errors cannot be entirely excluded. For this reason, the GLYN GmbH & Co. KG does not accept liability for possible errors and consequential damage resulting from the provision, performance or use of this material.

ELDIO Download Wizard

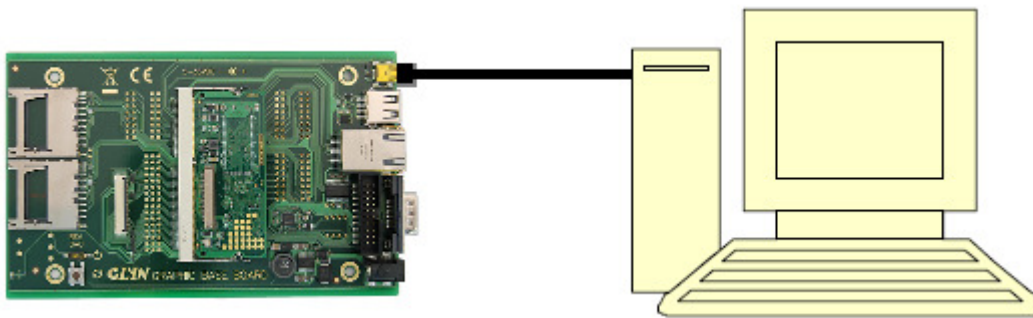
Programming Software over USB-Device with a small Windows program - This method works **only** if the memory (Flash) is empty (first time programming or cleared before).

ATTENTION:

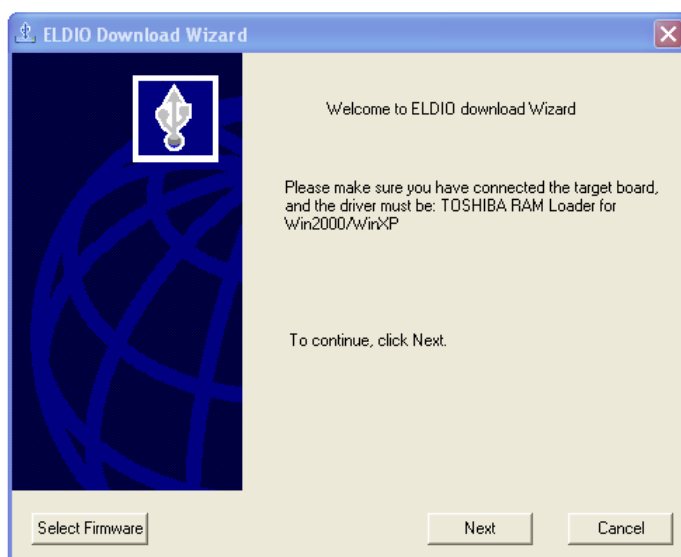
- Works only with Empty NAND Flash (at least page 0)
- Board has to be connected to PC without USB Hub

First, before using ELDIO Updater install the driver. Rightclick on: trl_drv_2k.inf (For Windows 2000) or trl_drv_xp.inf (Windows XP) and select install.

Connect the Base Board (USB-Device) to the PC. If you have problems with connection to the board when you attach the board via USB Hub, please connect the board directly to the PC.

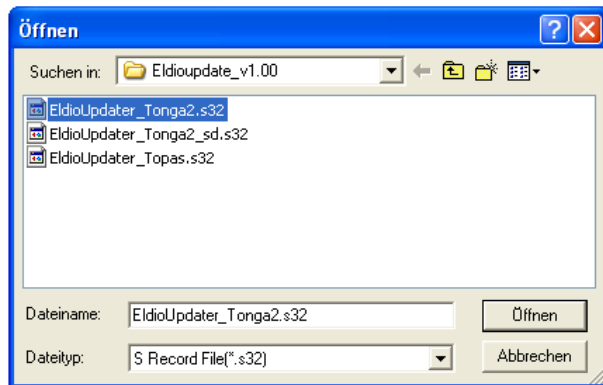


Start up ELDIOUpdater.exe



Lower left side - Click on Select Firmware - Choose Firmware for our board:

EldioUpdater_Tonga2.s32



Then Click on Next- Wait until connection established appears. Click on Next
Select Destination (Ram, NOR, NAND) – RAM or NAND.
Select start page (normally 0 if you want to flash u-boot, or bigimage)

Then select Target File to Flash. Click on next
Wait until flash process has finished.

There is also a small script “**gen_flash_image**” to make one “big” image out of the components – u-boot, splashscreen, kernel and root-filesystem.

Run this script under Linux in a terminal in the following way:

```
./gen_flash_image <u-boot> <kernel> <splash> <rootfs> <output>
```

Example:

```
./gen_flash_image ./u-boot_nand_tonga2.bin ./ulmage ./splash.bin ./rootfs.jffs2  
./output.bin
```

The result is one big output.bin file. Now you can program the complete software in one step!

You find it with a demo on the CD: Eldiouupdate_v1.00\bigimage